



Central Corridor Brownfield Assessment Project

MN Brownfields:
Areawide Contamination Forum
April 28th, 2009

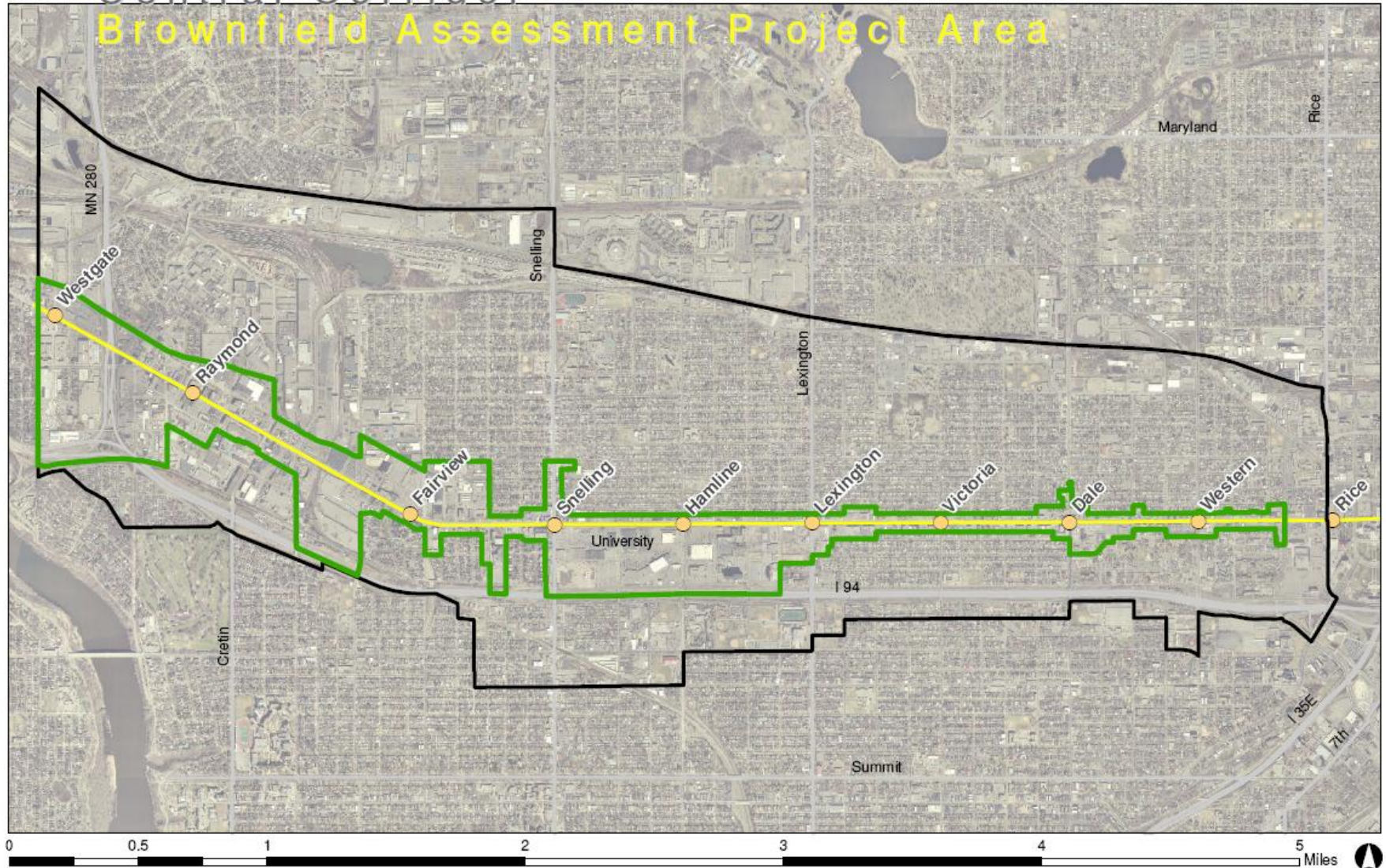
FY2009 EPA Brownfield Assessment Grant

- Coalition Application
 - City of Saint Paul
 - Metropolitan Council
 - Ramsey County
- Community-Wide
- 60/40 Hazardous/Petroleum
- Investigation and RAP development

Project Drivers

- CC LRT = huge public investment
- Leverage for economic development, redevelopment
- Legacy of contamination
- Environmental justice
- Public Health

Central Corridor Brownfield Assessment Project Area



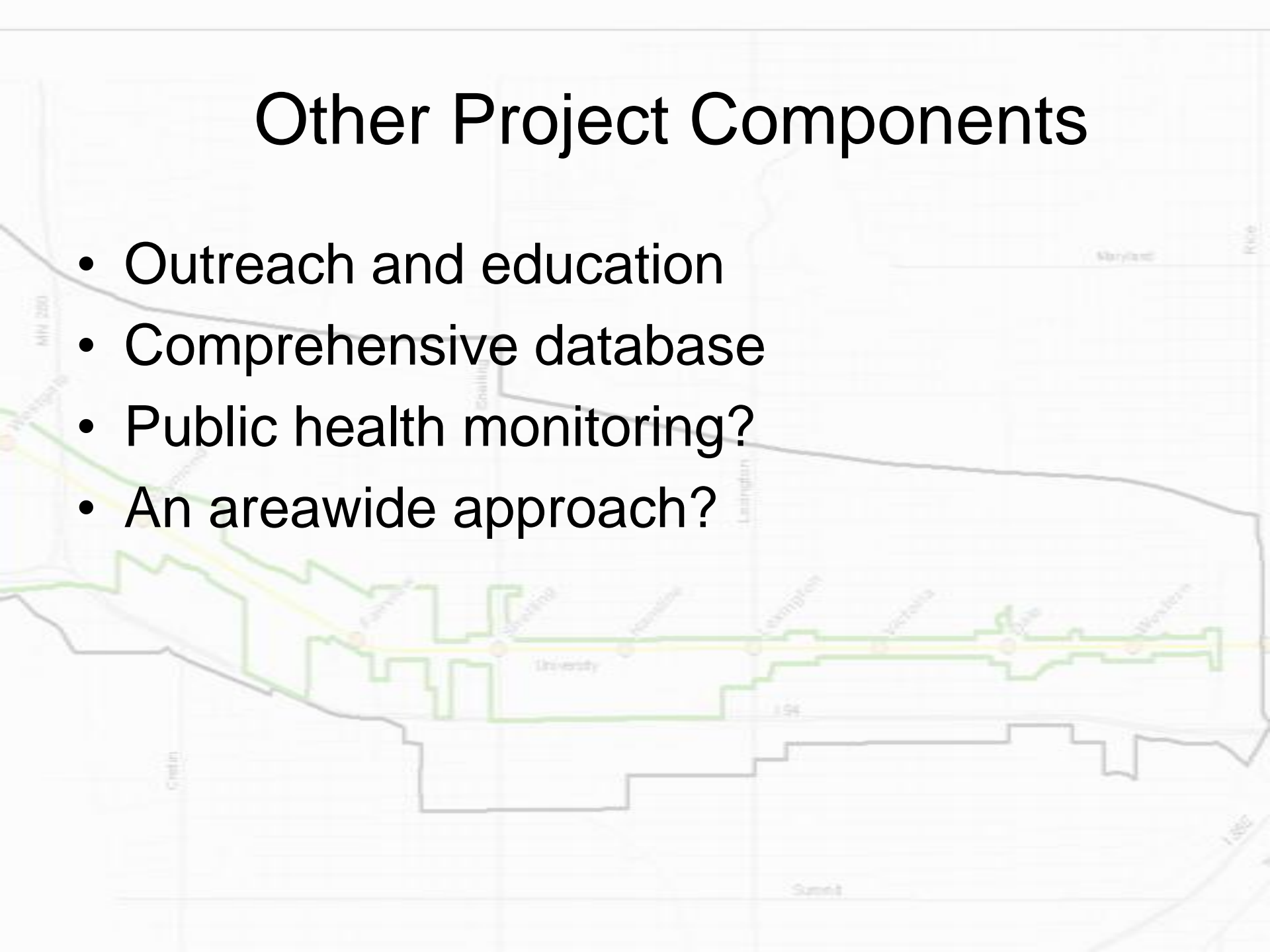
Legend

- Brownfield Assessment Project Area
- Community
- Planned/Future Stations
- Central Corridor LRT Alignment
- Major Streets



Other Project Components

- Outreach and education
- Comprehensive database
- Public health monitoring?
- An areawide approach?





- Contact:

Josh Williams

Saint Paul Planning and Economic Development

651.266.6659

josh.williams@ci.stpaul.mn.us

Marcus Martin

Metropolitan Council

651.602.1054

Marcus.Martin@metc.state.mn.us